

Strap  
placement

Fabric grain direction

A1

# Laptop or Tablet Bag

## 2-A

Bag

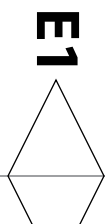
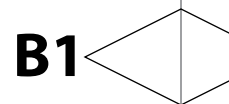
Cut 2 of fabric

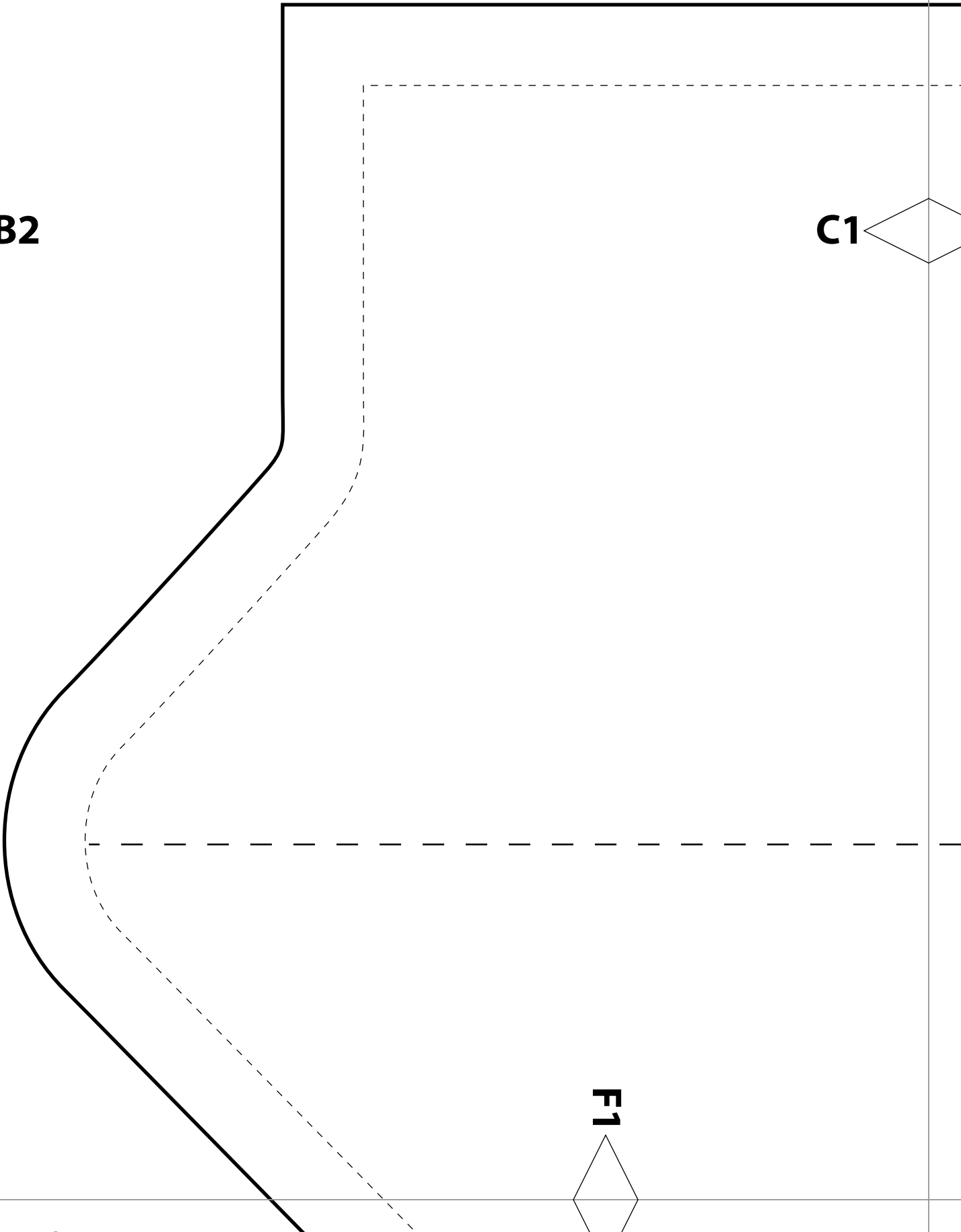
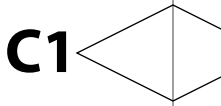
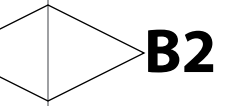
Cut 2 of fusible fleece

Cut 2 of lining

$\frac{5}{8}$ " (16mm)  
seam allowance

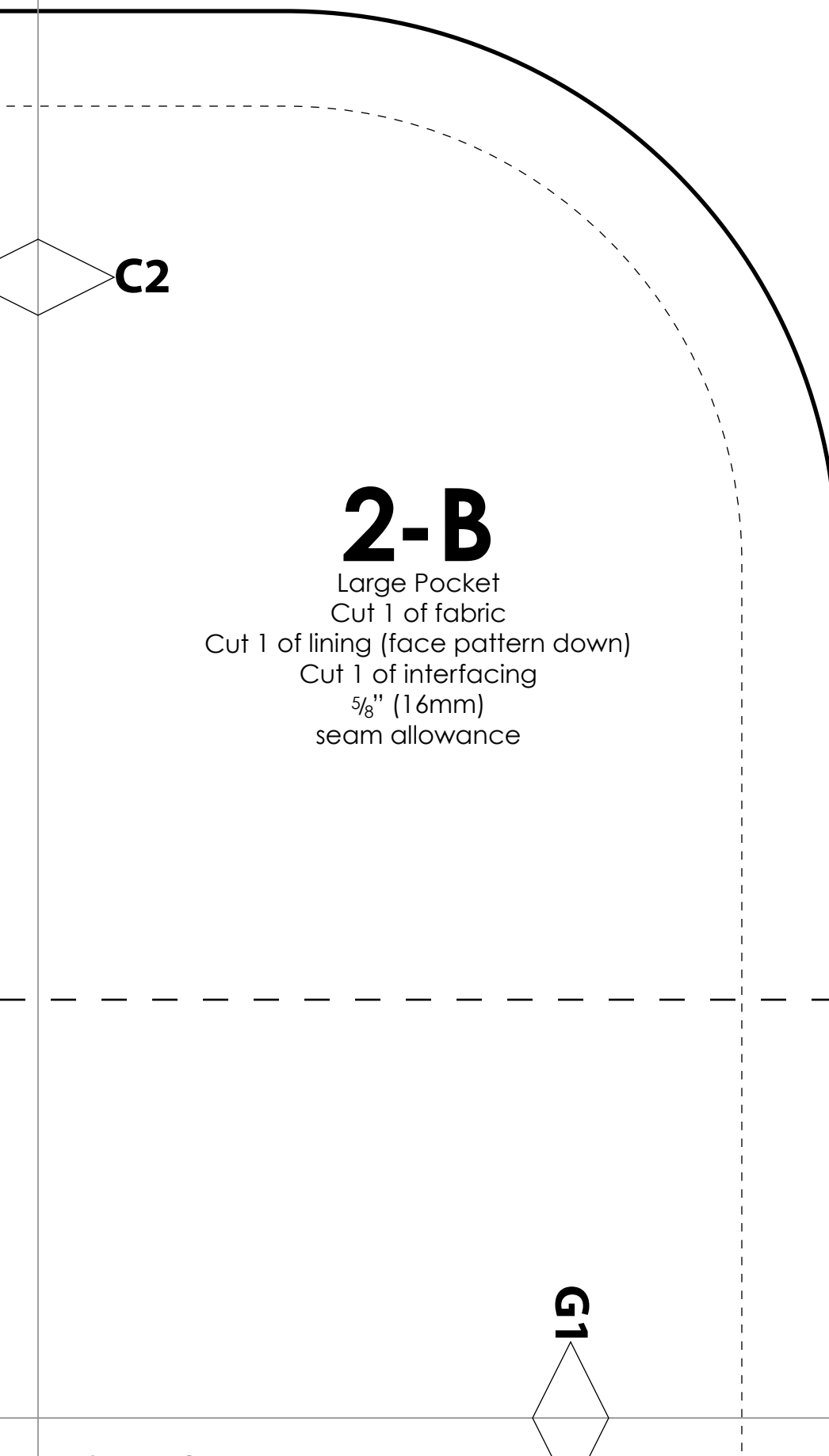
D1





**F1**



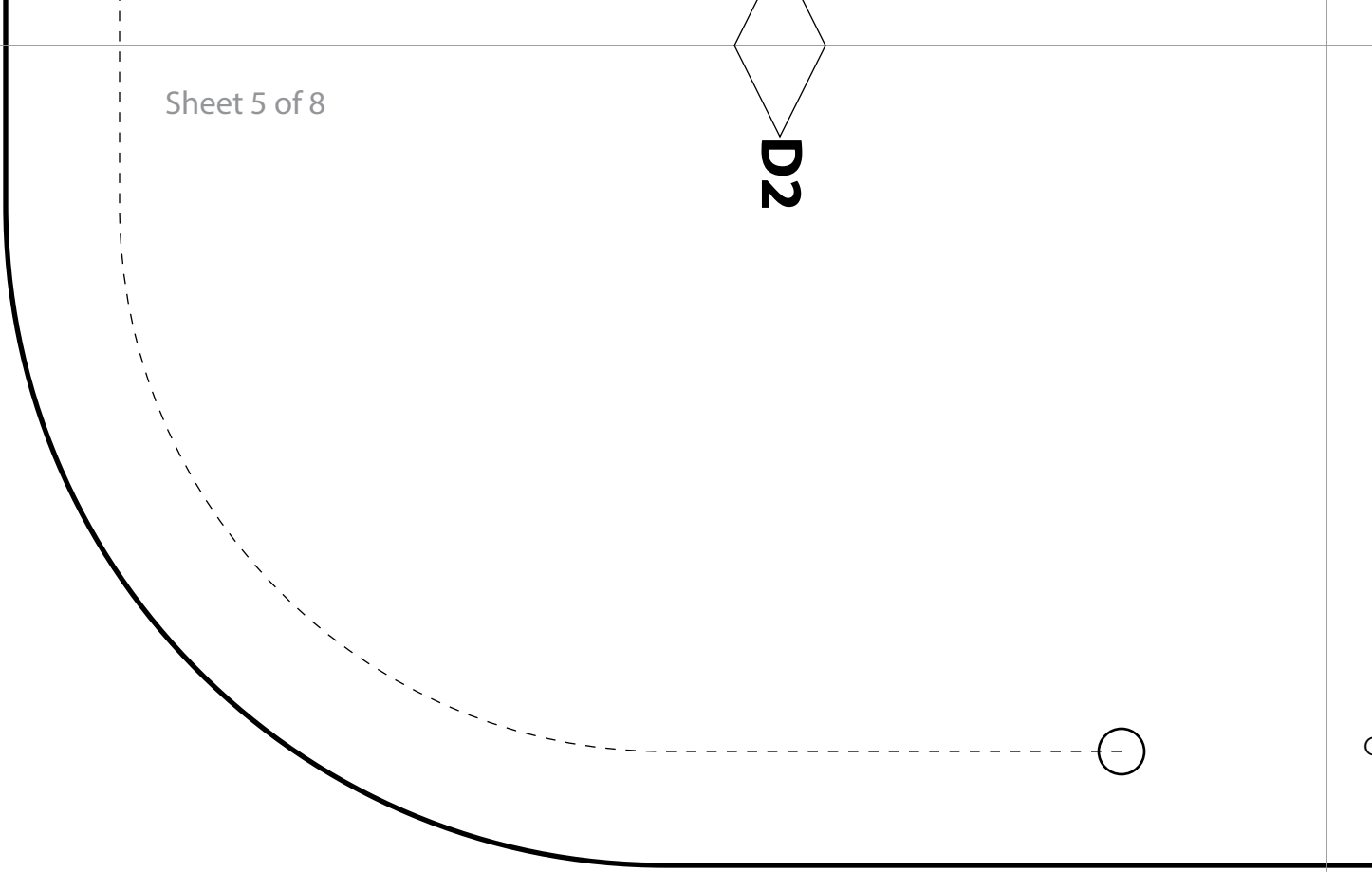
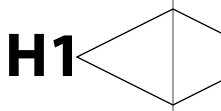
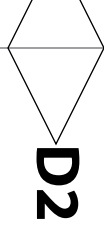


**C2**

# 2-B

Large Pocket  
Cut 1 of fabric  
Cut 1 of lining (face pattern down)  
Cut 1 of interfacing  
 $\frac{5}{8}$ " (16mm)  
seam allowance

**G1**



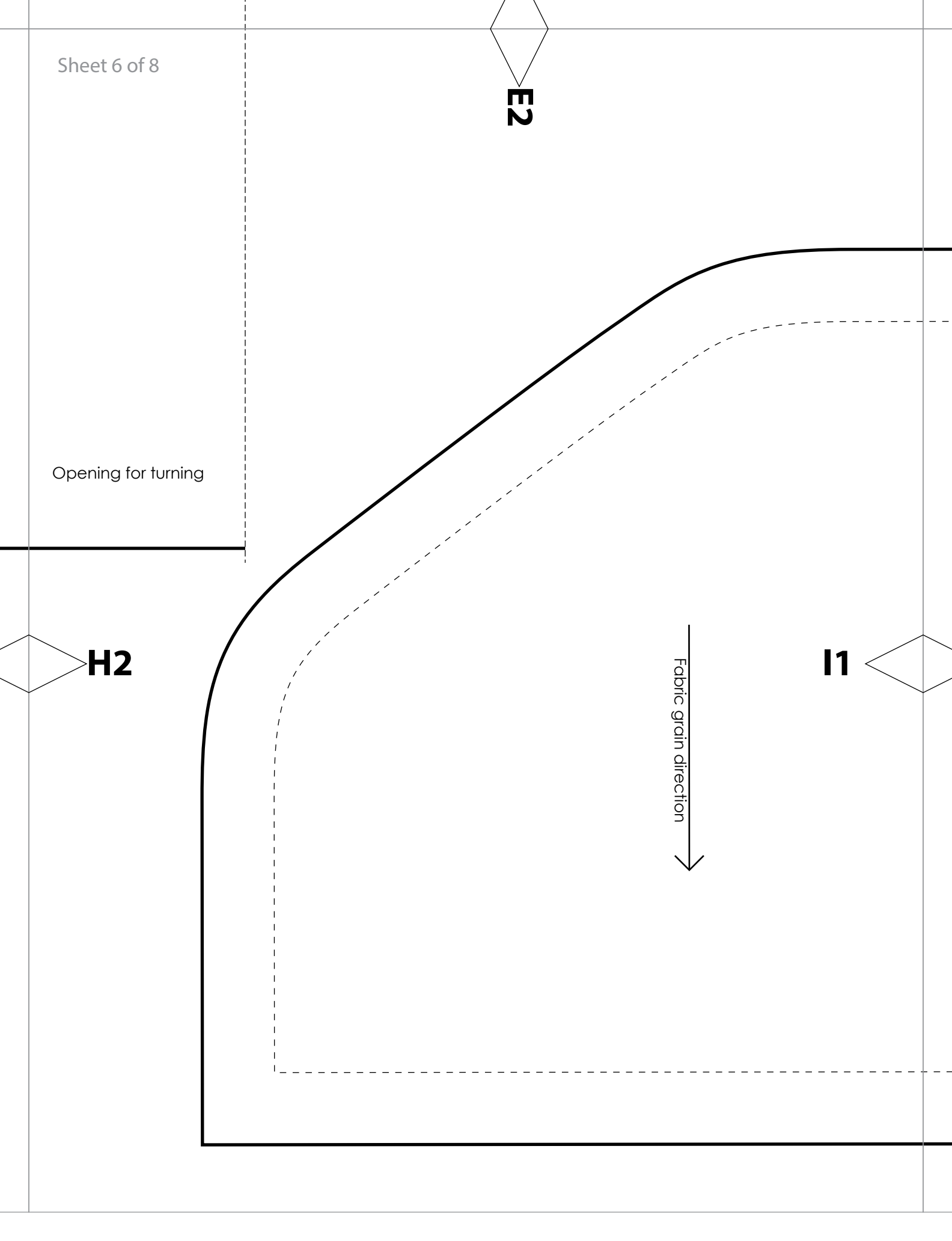
**E2**

Opening for turning

**H2**

**I1**

Fabric grain direction



**F2**


# 2-C

Small Pocket  
Cut 1 of fabric  
Cut 1 of lining  
(face pattern down)  
Cut 1 of interfacing  
 $\frac{5}{8}$ " (16mm)  
seam allowance

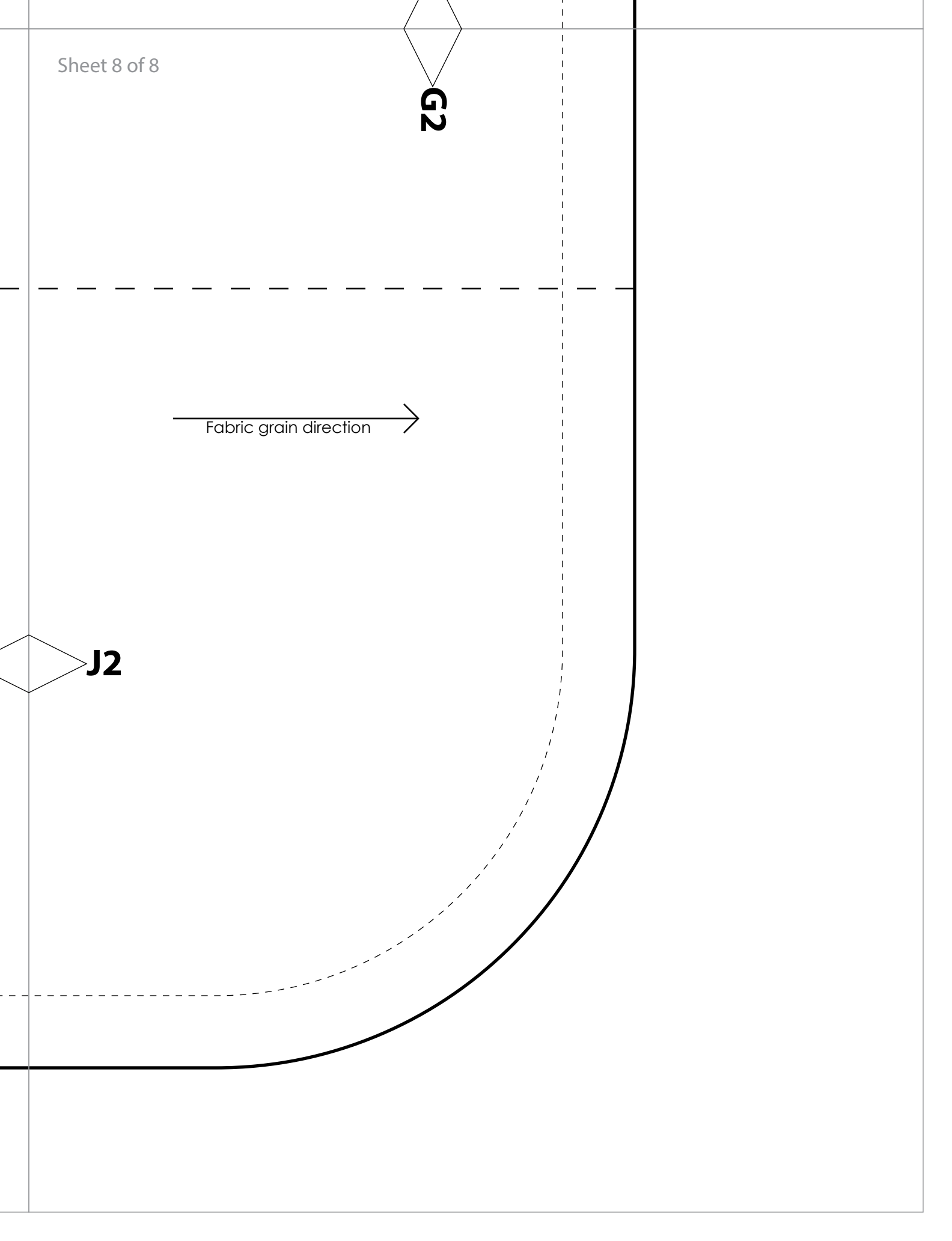
**I2**

**J1**

**G2**

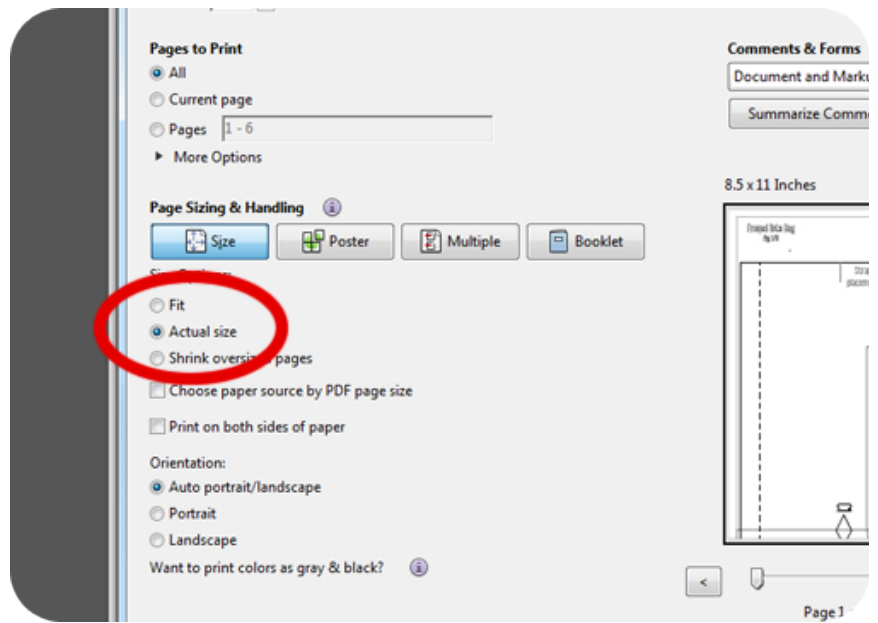
Fabric grain direction 

**J2**

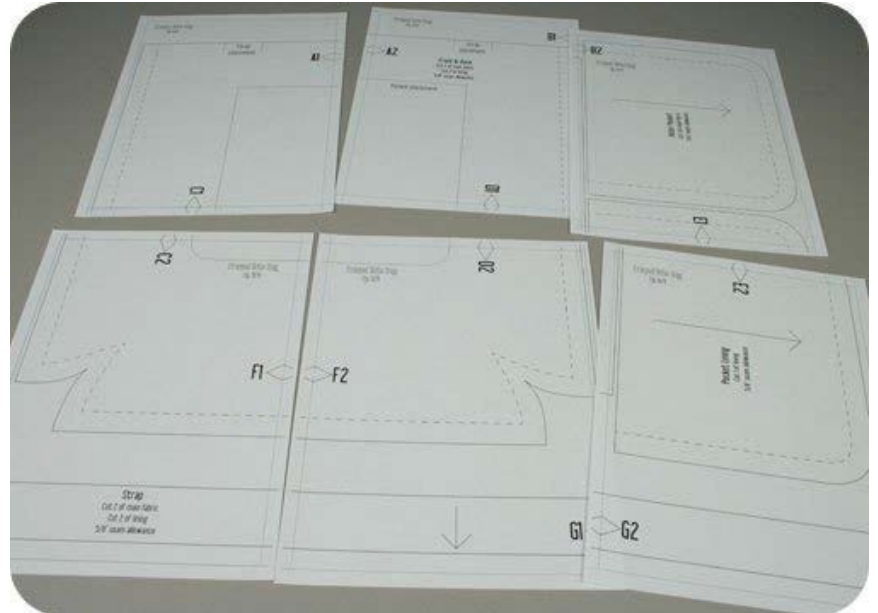




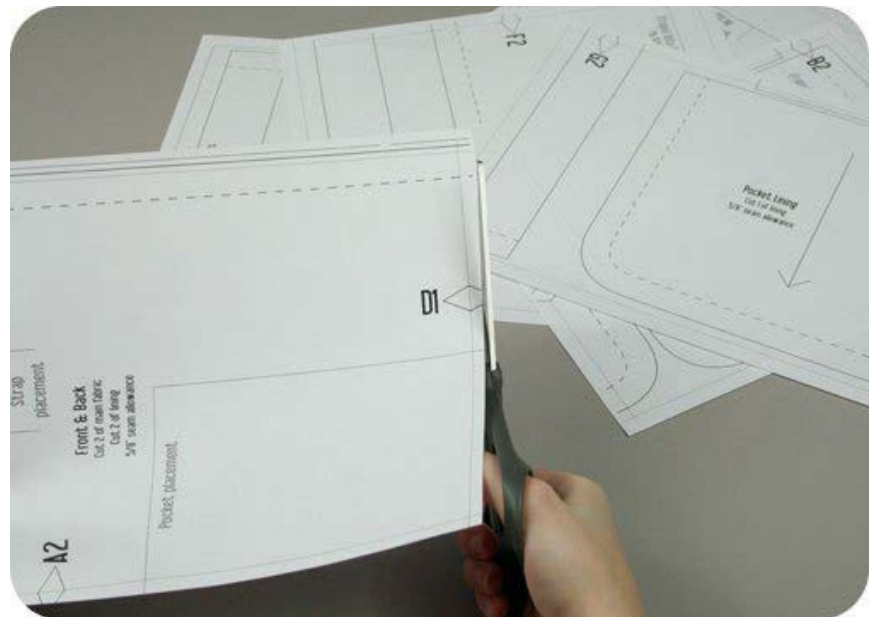
**1** I save my patterns as .pdf, so hopefully you have no trouble opening the file. To print it, all you need to do is make sure it prints at actual size, which you can be sure of by looking at the print dialog box.



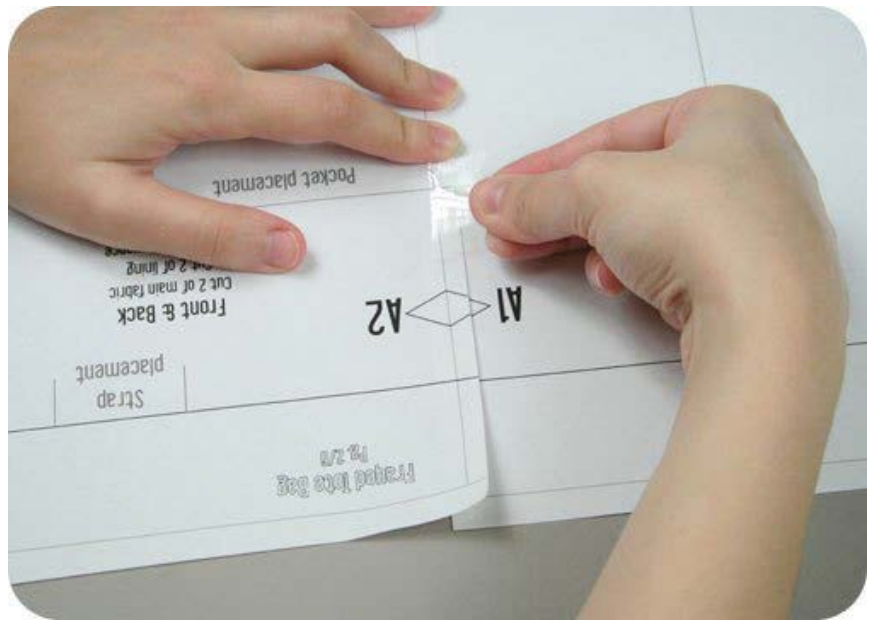
**2** One or more pages should print from the file. Each pattern page should have page numbers on it so you can be sure you have each page for the full pattern.



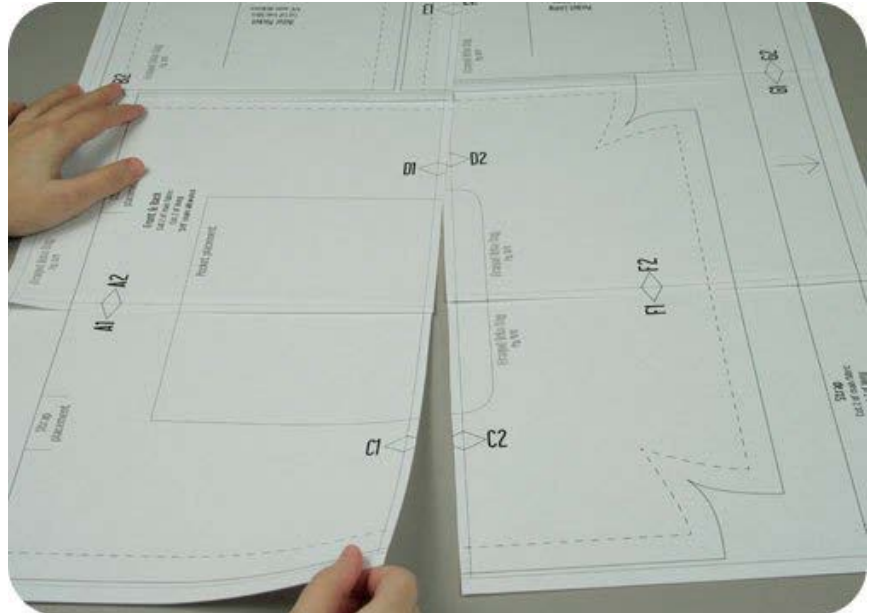
**3** Every printer will have a margin that it prints with so the image doesn't run off the page. To make assembly easier you'll want to trim off the blank margins that show up on your pattern pages. Mine, for instance, were about 1/4".



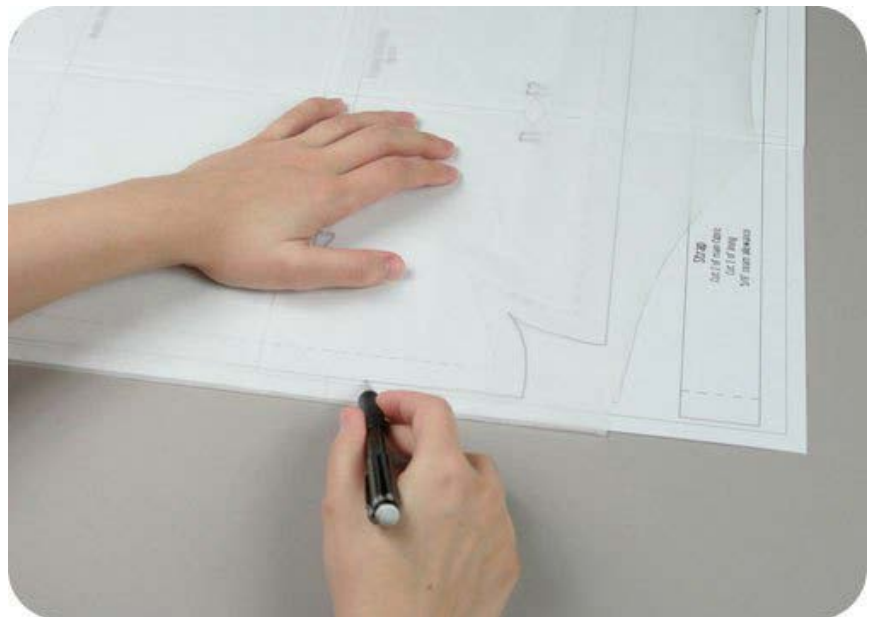
**4** To line up the pattern pages, match up the corresponding diamond shapes. Each diamond will have a letter, so it's simply a matter of matching 1 to 2. The faint gray lines indicate the border of every page, you should be able to line those up as well. When the diamond goes together, tape it in place.



**5** I prefer to build the pattern by taping the sheets into rows, then taping the rows together. With some careful rotating and adjusting it should all go together just fine. However, try not to get a headache over 1/8" here or there, it's hard to get paper just right with your own two hands and the patterns are not nearly so precise that they need to be that perfect.



**6** When all the pieces are taped up, some prefer to trace the patterns onto tracing paper to make proper patterns. Be sure to also trace other important symbols like the grain line, notches, dots, and other lines that mark placement. If you're frugal like me, however, you can also cut out the patterns as they are on printer paper. Be sure to use more tape along the corners and edges for reinforcement. Also be aware that the paper will be harder to pin through. But if you're not picky you should be fine .



**7** Some project pieces might be overlapped to save space. Note that they'll only be overlapped so one piece is entirely inside another. That way there are no crossed pattern lines to get jumbled up if you're tracing. If you're using the printer paper, you can usually cut out the center piece and then tape the larger piece back up and still use both just fine. After this you can cut out the tissue or printer paper along the bold lines. The dotted lines indicate your seam lines. You can then use those paper patterns on your fabric either with pin or pattern weights, then cut out your fabric for your new project!

